

PARTS OF THE EYE

Name: _____

Fill in the blanks with the numbers below

1 - lens

4 - retina

6 - optic nerve

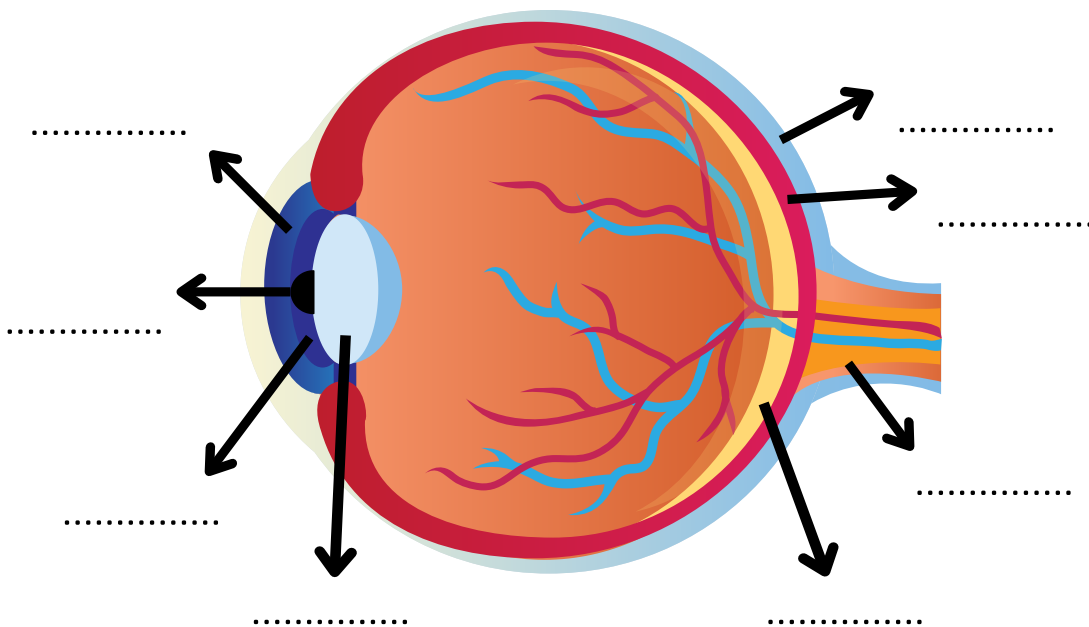
2 - iris

5 - pupil

7 - choroid

3 - cornea

8 - sclera



Fill in the blanks with some words in the box above.

- 1- The colored circular part of that eye that surrounds the black pupil is
- 2- is the transparent covering of the eye that protects the front of it.
- 3- is the area at the back of the eye that receives light and sends pictures of what the eye sees to the brain.
- 4- The circular black area in the centre of an eye is
- 5- is the group of nerve fibres that pass signals from the retina at the back of each eye to the brain.

